

ABSTRACT

Longer and repeated unemployment spells due to inappropriate employability opportunity resulted in exclusion from labor market. Long-term unemployment is evident for all ages, gender, and racial and ethnic groups, and it is also prominent for major occupation, for major industry, and at all levels of educational attainment. The major objective of the study is to address the causes of long term unemployment in Pakistan by observing the duration of worklessness specifically demand-side anxiety of job availability and those factors that increases the length of unemployment are investigated. The analysis of micro aspects of long term unemployment elaborates regional disparity across the provinces. Both Parametric and non parametric approaches of survival analysis are used to evaluate the objectives. Long-term unemployment is evaluated by constructing unemployment duration spells for Labor Force Survey of Pakistan for the period 2013-14. Estimation of Kaplan Meir indicates that survival function of a person decreases over the period of time. Transition from unemployment state to employment state is significantly higher for male than female, senior age group worker and secondary and higher education level. The unemployment duration of young workers is relatively longer than old age group. The finding reveals that the existence of longer duration of unemployment and demographic association presents the labor market. Unemployment is major issue in urban areas and, according to data set; existence of longer spell of unemployment is high in Punjab. Specifically the study emphasized that wage dispersion in labor market leads to prolong duration of unemployment of workers. Result of Weibull distribution found that significant wage dispersion leads to a longer spell because economy is not generating required numbers of job for capable workers. Consequently study suggested that there is need for formulating labor market policy by considering targeted groups. In addition to this there is also need to structure vocational training programs and apprenticeships so that transition from unemployment to employment would be easy.

Key words: Long-term unemployment, duration analysis, wage dispersion,

1. INTRODUCTION

Unemployment is the core issue of Pakistan's economy that leads the workers productivity towards downfall. According to economic survey of Pakistan estimated population in 2016 is 195.4 million that is quite higher among its neighboring countries except India. Age group pyramids of Pakistan shows that large proportion of young people is in productive age, which is the indication of prosperity of the economy but job creation is not sufficient to fulfill requirement of its industrious job seekers. Employers consider duration of unemployment as a critical evaluation at the time of hiring. Population age composition shows 56 percent of aged group (15-64) and 48 percent of aged 15-49 fall in industrious age group. During the era of 50s a large number of people registered themselves as unemployed and it remained unchanged in the era of 60s. According to the LFS, unemployment in 1950-51 was amounted to 22 percent as proportion of total population of the labor force but at that time Pakistan's human resources were unutilized. In absolute terms unemployment increased from 6 million man-years in 1950-51 to 8.04 million man-years in 1960-61 in spite of a 2.4 percent (Iftikhar 1972). Unemployment rate in Pakistan was decreased to 5.9 % in 2014. Average value of Unemployment rate in Pakistan from 1985 until 2015, reached at a high of 7.8% in 2002 and a recorded a very low of 3.10% in 1987.

In context of Pakistan a vast literature is available that encounters unemployment on its macroeconomic perspective. While Long-term unemployment is completely ignored. Long term unemployment is not only creating worst impact on the economy, but it is also affecting mental and physical health and higher mortality rates among individuals. The link between longer duration of unemployment and its worst consequences is comprehensible. People are unemployed for a longer period of is less powerful to affect market wages. Lower wages and lifetime incomes are associated with longer periods of unemployment, the reason for the decreasing earnings prospects are not clear (Stephan 2013 and Pierre 2000). However, both studies did not cover the aspect that how long-term unemployment affects the wage structure in labor market.

The aim of this article is to factor out the elements of widening the unemployment spells by considering individual's characteristics and geographical area. It also investigates the wage

dispersion and incidence of unemployment, which can lead to comparatively longer duration of unemployment. Long-term unemployment is measured by considering the unemployment duration; that is, the length of time that an unemployed person spends seeking for a job. Spell of unemployment as an indicator of long-term unemployment by measuring probability of quitting unemployment status and simultaneously captures to what extent an inflow in unemployment occurs in a given year. Person's probability to exit from unemployment depends on average eminence of inflow. The duration of unemployment gets longer due to insufficient availability of employment opportunity, recession, rise in demand of skilled labor and structural changes. Kaplan Meier's hazard risk model is used to analyze the length of unemployment duration. Kaplan Meier Estimate is used as non-parametric approach and exponential and Weibull as parametric approach for finding the causes that can lead to elongate the spell of unemployment.

The article is arranged in following section: In section 2 reviewed past literature that encounters longer spell of unemployment and turnover by human characteristic. Survival analysis and its approaches are methodically discussed in Section 3. Section 4 contains estimation of non parametric approach. Sections 5 have parametric modeling that encounter elements that increase unemployment spell longer. Section 6 finally discuss the concluding analysis and policy recommendation.

2. Literature Review

Evaluating the factor that prolonged the unemployment duration, existing literature is portraying a clear picture of individual behavior and labor market functioning. There is a sufficient amount of literature that encounters the issues of long term unemployment and its Impact on socio-economic stability and labor market condition. Most of the studies focused on job search behavior by using hazard rate model (i.e Gerard j. et.al (1998), Anders et.al (2006), Roberto et.al (2011), Namkee et.al (2000) tasnim et.al (2013) and Alexandra et.al (1999)). This section firstly reviewed issues on world perspective and followed by Pakistan context.

Wage reservation plays key role in the job search theory there is positive probabilistic association between these two elements but it is not significant factor in explaining incomplete unemployment spells. Variable that captures the attractiveness of the job seeker to potential employers such as past experience, and educational attainment, and factors which influence the

search effectiveness of job seekers such as eligibility for unemployment benefit were important for explaining unemployment duration. So that presence of unemployment is not caused by an inflow of workers in unemployment highly qualified person is also hindered due to recession. A moderate increase in minimum wage increases outflow from unemployment only for those that are receiving unemployment insurance but there is not any significant impact on those who does not get any unemployment insurance. However it makes situation worse for unskilled worker (Gerard j. et.al (1998) Stephen (1998), Alexandra et.al (1999) & Roberto et.al).

Toshihiko (2008) evaluates that increase in unemployment duration is caused by an increase in wage inequality within group and an increase in incidence of unemployment. He concludes that both an increase in wage dispersion and decrease in incidence of unemployment can cause the average duration of unemployment significantly longer.

Unemployment Insurance benefits privilege and size of Unemployment Insurance benefits during unemployment spells can longer the spell and it has impact on post unemployment earnings. A weak influence has found on length of privilege phase on the conditional distribution of unemployment duration for entitlement lengths up to 12 months. There is perceptible effect on quitting from unemployment for privilege lengths more than 12 months. These effects are smaller for after short unemployment durations; it increases for the higher quantiles of the unemployment duration distribution, in particular for the older unemployed with extended entitlement periods for unemployment benefits (Ralf et.al (2010) & Stefan et.al (2014)). Long term unemployment weighs on negative pressure that unemployment has on wages. There is no contradiction in the unemployment elasticity of wages either considers wages together with overtime or not. To distinct between manual and non manual worker a separated model is made and it has found that the unemployment elasticity of wages is higher for manual. Probabilities for reemployment for those who are in active labor force in link quarter are higher than unemployed. Magnitude of predicted employment probability losses is getting wider (Pierre (2000) & Katherine et.al (2015)).

Regional disparity and individual heterogeneity are important factors that cause an increase in the unemployment duration. Duration of unemployment is significantly influenced by individual heterogeneity, labor market mobility; educational achievement and job seek activity those areas where unemployment is high and literacy rate is low, young labors are more inclined to work on

low wages. There is a declining trend in job security due to change in FLFP and permanent job loss duration (Ferhan et.al (2016), Farhat (2009), Robert et.al (2005), William (2003) & Namkane (2000)). Unemployment in youth shows acute position in Pakistan. In regional context it is basically an urban phenomenon. In rural areas it is less intensive because of disguised unemployment and presence of informal social safety nets' in terms of land holding, extended families and strong family ties that cushion the pressure of youth to aggressively pursue jobs. Skill acquisition and vocational training do not have significant impact in increasing the probability of employment in regional context. Unemployment is high in KPK. Female unemployment is higher in urban areas than in rural areas. Age and marital status had significantly negative influence on making transition from labor force to outside the labor force. Being head of the household was positively related with moving out of the labor force (Sheikh (2002), Lubna (2006) & Waqqas (2007)).

Livanos (2009) investigates the impact of academic degree and field of study on short term unemployment and Long term unemployment. He concluded by declaring that employment chances increase due to higher education. It was also found to have a (more moderate) impact on avoiding long term unemployment. The effect of higher education on long term unemployment is both less intense and more homogeneous than on short term unemployment. The estimated magnitude of the long term coefficients is smaller and the cross country differences are also minor in this category.

In Pakistan youth starts their career in early stages so there is large possibility to face higher unemployment. Highly educated youth having educated parents are more likely to face higher unemployment because they are chooser than less educated youth. The potential wage advantage an unemployed individual would enjoy in a public sector job was found to exert no independent influence on the stated preference indicating that fringe benefits and work conditions are perhaps more important considerations (Asma (2007) & Rizwan et.al (2010))

A general concluding this section, spell of unemployment gets longer due to unemployment benefits, wage inequality and insufficient job creation. While in context of Pakistan unemployment is high in urban areas due to job skilled mismatch and transition from agriculture subsistence to industrialization.

3. Data & METHODOLOGY:

The micro data that shall be used in this study will be taken from the Labor Force Survey of Pakistan (LFS). It is main source of detailed information of labor force market characteristics. It is covered representative sample of 40,747 households to produce disaggregated estimate at provincial and national level with rural/urban breakdown. The survey also provides quarterly representative results at national, rural/urban level. For duration analysis LFS 2013-14 has taken to estimate all human and market characteristics.

SURVIVAL ANALYSIS:

It is necessary to address both inflow in unemployment and outflow from unemployment as well as to what extent job creation satisfies job seekers, and to what extent it affects different groups of labor force in order to formulate adequate policy for labor market. A person remains out of work for a longer period of time; that period of time refers to as unemployment duration. The unemployment spell is a core variable that can draw clear picture about the variation in labor markets and it is extensively used in the job search models when studying the flows into employment, unemployment and inactivity status. Duration analysis methods deal with estimating models of time to event data. The time that a person spends in a particular state (e.g., unemployment, poverty, marriage, etc), i.e., the duration of that spell, is considered to be a random variable. The aim of analysis is to understand what determines the duration of these spells (or in other words what determines transition out of this state).

There are different analysis methods that depend on time variable either it is discreet or continuous. Most spell durations are determined by behavioral processes it should be considered continuous. Unemployment spells is measured in terms of days. Survival time is considered as a causal variable and it is the actual realization.

Let consider T as the causal variable that is representing unemployment duration in number of day whereas actual realization of spell duration is represented by t . T is considered as a continuous causal variable, with a cumulative density function (cdf) shown as $G(t)$, and a

probability density function (pdf) shown as $g(t)$, probability that a person fail having duration less than actual realization spell is:

$$\Pr(T \leq t) = G(t) \dots\dots\dots (i)$$

The possibility that a spell is longer and equal to actual realization of time t considered as survival function that is represented as:

$$\Pr(T > t) = 1 - G(t) = S(t) \dots\dots\dots (ii)$$

Analyzing of survival spells based on Hazard function. In continuous study, it is the ratio of the survival time density function (or the probability density function of the random variable, spell duration) to the survivor function.

$$\phi(t) = \frac{g(t)}{1-G(t)} = \frac{g(t)}{S(t)} \dots\dots\dots (iii)$$

The integrated hazard function is

$$h(t) = -\log_e(S(t)) \dots\dots\dots (iv)$$

As is evident the hazard function is always nonnegative. Hazard rates are predicted by maximum likelihood estimation (MLE) methods. It is assumed that there is no left-censoring and it is not dependent of spell across i th person, it assumes only single state of transition, Maximum likelihood function can be described as:

$$L = \prod_{i=1}^N \phi(T_i)^{I_i} S(T_i) \dots\dots\dots (v)$$

Or in logarithmic form

$$\log L = \sum I_i \log \phi(T_i) + \log S(T_i)$$

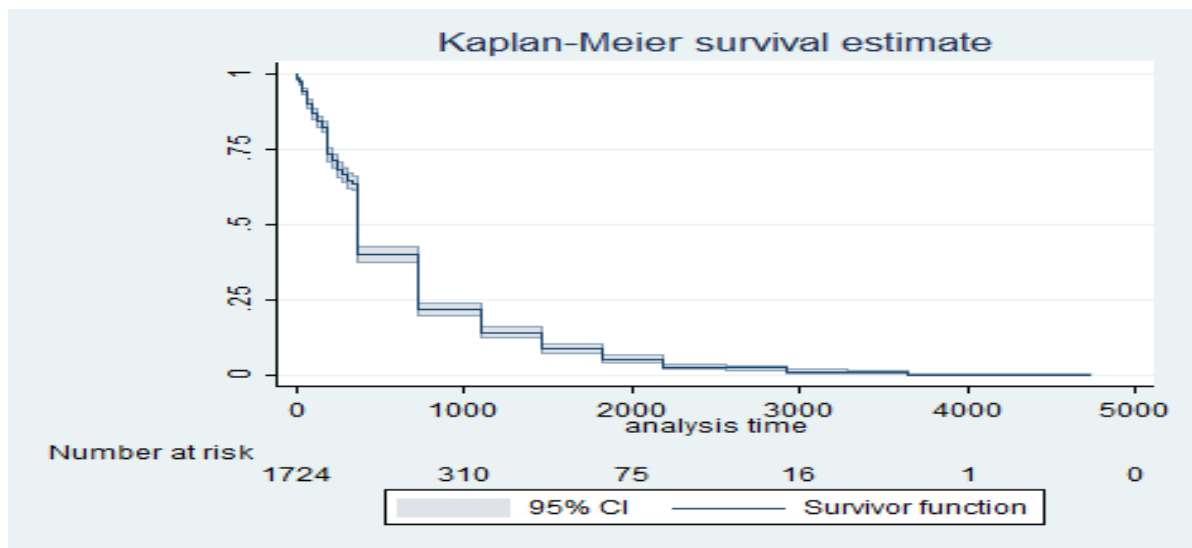
Where $\phi(T_i)$ represents hazard function and $S(T_i)$ is the survivor function, i and T is measure the time-span of the entire or right censored duration for individual i , the number of durations is N and I_i is an indicator for whether this is a completed spell or not.

3.1.1. **Duration of Unemployment by Non Parametric Estimation**

Recent economic analysis is focusing on the use of survival analysis in empirical analysis of different economic phenomenon. In biomedical traditional approach used this Survival analysis in order to study a well defined event for a group individual. Probably event is described in terms of a failure event. Failure event happens subsequent to a given spell of time it is termed as failure time. It can happen once and most of the time for any i th individual of group or phenomenon under assessment. Unemployment spell of individual is an example of failure event.

It is expedient to show estimation of the dispersion of unemployment spell without incorporating regressor. Nonparametric estimation is used for this purpose that provides descriptive analysis as well as gives empirical support to baseline hazard. The standard formula that is widely practiced in estimation of survivor function is $S(t) = 1 - F(t)$ in which censored observation is controlled with the help of non parametric approximation.

Kaplan Meier in table 1 is showing both survival and failure function of unemployed persons. Individuals those fall in risk at initial time is 2088(that is unemployed individuals). So that $n_j = 2088$. In the first day 2 individuals left the state of unemployment implying $d_k = 2$. Survival function for the first day is estimated as $s(t) = (1 - \frac{d_k}{n_j})=0.9990$.



Source: author's estimation

It is an indication that individuals will be staying in unemployment state given that person survived at the start of the first day (99.9% of initial risk set). The failure function increase rapidly over the period of time and survival function decreases vice versa, and after that

reduction in survival function is steady. Reliable information can be obtained by using this precise estimation. The estimated survival function is a product of the conditional survival probability for surviving beyond t_j , the conditional survival probability is an increasing function of time. The survival function decreases as unemployment duration increases. This is one characteristic of a survival function (Collett, 2003). Graphical presentation of Kaplan Meier survival function is given above. Y axis is representing approximation of survival function without regressor, at 95 percent confidence interval. Unemployment duration is experienced above 5000 days (showing at x axis) .It signifies that exit probabilities from unemployment is lower in initial period of unemployment. unemployment in short term might be due to lack of required. Unemployment spell increases from more than a year, the proportion of decline in survival function becomes faster. It is an indication that people having longer unemployment spell have higher leaving probabilities.

Survival curves are contrast in order to capture univariate association between unemployment and a vector of regressor covariates. Survival curves are plotted for age group, gender, education level, occupation groups. Parallel curves imply that the covariates have a significance influence on unemployment duration.

In table 3.1.2 the length of unemployment is shown by considering age groups. People in the age category (21-30) are facing long duration of unemployment that is longer mean duration time in days as compared to senior workers age group. Large proportion of the representative falls in this age group who have been facing longer unemployment spell. This is an important indication showing that young people who start their career at early stages, probability to face longer unemployment spell is higher for them. The overlie lines in graph given in annex 3.1.2 suggests that adults and youth have similar probability of exiting the state of unemployment in short period of time. Individual falls in the category of (aged 15-34), survival function of them decreased faster than one that falls in the category of (35-64). Reason behind this is that employers have a preference to invest in young labors once they acquire some experience

Proportion of male who registered themselves as unemployed is thrice time higher than unemployed female but mean duration of unemployment for male is less than female duration. Married women have longer duration of unemployment spell because of having a working husband and due to household chores. Above result reveals that probability of re-entering in

labor force for female declined due to taking care of older relatives and young children in the household. Numbers of children has a negative influence on the probability of joining labor force. Highly educated females are more inclined to be a participant of labor force in urban areas than in rural areas. , the educational impact is double in urban areas compared to rural areas.

The survival function for male and female is not identical and it can be seen in graph 3.1.3. Female has higher survival function than male; it is an indication that transition from unemployment to employment is higher for male as compared to female. In short run both have lower leaving probability from state of unemployment. It can be shown by the small declining variation in their survival functions during short period of analyzing time.

Those People, who had experienced in tough daily routine task, have longer spell of unemployment. Skilled workers are more inclined to switch their jobs from tough routine task work to easy while on contrary less skilled workers are searched manual jobs instead of tough routine task. Study analyze the approximation of unemployment duration for executive, managers, professionals, technicians, clerks, sales workers, fishes and forestry, skilled agriculture workers, craft and related workers, plant and machine operators and elementary group as well. Armed forces occupations are excluded from the data. Those persons who have experienced in white collar jobs their survival function is not much higher than those who are experienced in elementary, sales, clerks and agriculture workers. It indicates the possibility of quitting unemployment significantly depends on the exceptional work. People can find out employment opportunity if they have experience in related field. The above graph apparently illustrates the impact of previous experience of job on the possibility of exiting unemployment. People have longer unemployment spells that have past experience in daily tough routine work. Job searching is a time-consuming procedure and it is related to the occupation in which job is searched. Workers employed in an occupation that contain regular tough routine work, probability of finding jobs decreases. According to Kaplan Meir survival functions, workers employed in occupation like clerk 21.1 percent, sales worker 12.1 percent, Skilled agricultural, forestry and fishery workers 26.85 are less likely to quit unemployment.

The duration of unemployment is significantly longer for dismissal for a personal reason than a dismissal for economic reason, especially for less educated people served as unskilled workers. Unemployment is high in urban areas in Pakistan. According to our data set incidence of longer

unemployment is relatively high in Punjab as compared to other provinces. Workers are unemployed in Punjab to the extent of 47.68 percent. KPK is another province where unemployment is quite high. As we can see in the graph given below that in short period of time probability of quitting unemployment status is similar for all provinces except Baluchistan. Baluchistan is less developed province as compared to other provinces. People living in Baluchistan mostly associated with government or private job and engage in agriculture farming. Water crisis in the province made situation worst in rural Baluchistan.

Another main characteristic of the labor force is education. It helps individuals to establish a successful career. It is an important aspect in order to link education and labor market condition as well as economic situation of country.

Educational achievements are represented by primary secondary and tertiary level schooling of selected sample. Survival function of eight sub groups of educational attainment represents probability of living in the state of unemployment in a particular time period. Survival rates decreased quickly in starting period of unemployment showing that people can easily leave unemployment spell. Before reaching 1000 days survival rate decreased at a decreasing rate showing that probability of leaving unemployment state is quite difficult. Kaplan Meir graph shows that people having tertiary schooling leaves unemployment state earlier as compare to secondary and primary school leavers. Human capital considers an important asset in any organization. At the time of scrutiny employer gives more weight to education more even when they has imperfect information about required skill. Diploma holders probably find job easily in labor market.

3.1.2. Non-Parametric Approach:

3.1.2(a).Exponential & Weibull Distribution

Exponential distribution is based on the assumption of constant hazard rate over the period of time. It is often called as memory less distribution because the length of living in particular state is not affect the probability of leaving that state. By formulation, the exponential probability density function can be written as:

$$f(t) = \lambda \exp(-\lambda t) \dots (1)$$

And survival function is:

$$S(t) = \exp(-\lambda t) \dots (2)$$

Whereas instantaneous hazard rate is:

$$h(t) = \lambda \dots (3)$$

Exponential distribution holds both assumptions of PH model and accelerated failure time(AFT) model. Exponential model assumes constant hazard rate over the period of time that is identical to Ph model so that it can be used as a PH distribution model. It also holds assumption of AFT model that survival time decelerate (accelerate) by invariant factor at different levels of covariate. Exponential model coincides with Weibull distribution. Weibull distribution is based on two parameters. CDF of Weibull distribution is:

$$F(t) = 1 - \exp(-\lambda \cdot t^\alpha) \dots (4)$$

Where both parameters (α & λ) are nonnegative. Probability distribution function is:

$$f(t) = \alpha \lambda \cdot t^{\alpha-1} \exp(-\lambda \cdot t^\alpha) \dots (5)$$

Survival function is:

$$s(t) = \exp(-\lambda \cdot t^\alpha) \dots (6)$$

Whereas instantaneous hazard rate of Weibull distribution is:

$$h(t) = \frac{f(t)}{s(t)} \dots (7)$$

Or

$$h(t) = \frac{\alpha \lambda \cdot t^{\alpha-1} \exp(-\lambda \cdot t^\alpha)}{\exp(-\lambda \cdot t^\alpha)} \dots (7.a)$$

Weibull distribution is reduced to form exponential distribution when $\alpha = 1$ and form exponential as:

$$\lambda(t) = \lambda \dots (8)$$

Hazard rate is continuously increasing that shows a positive duration dependence where $\alpha > 1$. Hazard rate is decreasing showing negative duration dependence where $\alpha < 1$. Within the nonparametric approach, one may use the partial likelihood framework suggested by Cox (1972) which estimates the covariate effects but not the baseline hazard, or the approach suggested by Han and Hausman (1990) which estimates both the covariate effects and the baseline hazard parameters (also sometimes referred to as the incidental or nuisance parameters) simultaneously (the Han and Hausman approach is an alternative formulation of the approach originally proposed by Prentice and Gloeckler, 1978 and extended by Meyer, 1987). Between these approaches, the Han and Hausman (HH) approach has many advantages.

In order to describe factors that leads to unemployment duration Cox proportion hazard model is used. Cox proportion hazard model does not make any assumption about the shape of hazard function. It treats time as a continuous and also it assumes that covariates have constant effect over the period of time. The model of hazard can be written as:

$$\lambda(t; z) = \lambda_o(t)e^{z(t)\beta} \dots (9)$$

Where $z(t)$ is the vector of time-varying covariates that describe the unemployment duration of an individual, $\lambda_o(t)$ is considered as baseline hazard that is a nonparametric approach (search from net). Problem of heterogeneity is aroused during analysis of hazard rate. Individuals' having low unobserved heterogeneity among unemployed persons has longer unemployment spells. Thus, the baseline hazard corresponds to an observation with $x_i = 0$. Assumption of constant hazard rate over the period of time of PH model is usually not considered as realistic. Hazard rate should be identical for per unit variation in covariate. Variable age is used in mostly micro dataset of duration model that infringes PH assumption. Hazard rate should be identical to all sub group of age (e.g. sub group of age 10-25 years old, 25-40 years old, 40 and above years old). PH assumption can be verified by different test like log minus log graph with partial residuals.

3.2. Result Analysis:

Dependent variable in the model has been taken as duration of unemployment of i th individual in the sample that is measured in days. Left censored are not considered for estimation. 1457 observation are right censored spell are also incorporate in the study because it is feasibly managed in likelihood framework. For model specification individual characteristic, demographic characteristic and market characteristic are used in Weibull model.

1724 Individual has been selected from original sample (means those individual who has experienced of unemployment). So that there were 267 people who have left unemployment status at the time of conducting survey, whereas 1547 people are still searching for employment. This study mainly focuses on single unemployment duration. Transitional state from out of work to inactive from labor force is same for transition from out of work to employment. It is sometime noticed that shape parameter of hazard function and values of independent variable parameters are different when hazard estimation is restricted to a particular state of transition.

Personal characteristics are used in the analysis that captured their effect on unemployment spells: age, gender where male represents 74.65% of the total sample, educational attainment — referred as years of schooling, Prov have taken as provincial dummies Khyber Pakhtunkhwa, Punjab, Sindh and Baluchistan, LFP— labor force participation 1 equal to that i th individual is an active member of labor force, children in a house represents number of children in the household and wage deviation represents wage dispersion in the sample .

Economic performance started deteriorates from 2008 due to global crisis fuel shock and internal electric shortages, political environment and natural disasters; flood in 2010 and 2011. Result shows that unemployment spells is significantly high in Punjab. Flood and power breakdown may be the result that severely affected both agriculture and industrial sector of Punjab. Industrial production capacity decline due to this hinders leads to long unemployment duration. Another possible explanation may be that absorption capability and job creation in labor market is low. Result shows that these elements adversely affect the labor market at provincial level.

Result also shows that gender and age have a significantly positive association with length of unemployment spell. Young labor who is just going to start their career, experience shorter duration of unemployment as compare to those who are already in labor force and seeking for job. There is a significant withdrawal's of female from LFP in favor of household chores and child care. Age is found statistically significant at 1 percent level of significant with positive

sign: getting older increases the hazard rate of leaving the state by $[\exp(\beta_k) - 1] \cdot 100 = [\exp(0.316) - 1] \cdot 100 = 37.16\%$. Gender inequality exists while recruiting the workers employer prefers to hire male worker in some occupation especially heavy routine work industry. Employer avoids female hiring because of their domestic responsibility. While female has experienced shorter duration of unemployment than male. Thus highly educated females are more inclined to be a participant of labor force in urban areas than in rural areas.

Human capital theory considers educational attainment as a key instrument to enhance productivity of worker as well as help in boosting economic activity. The educational impact is double in urban areas as compared to rural areas. . Tertiary education is considered as a crucial device for socioeconomic progress and plays vital role in economic mobility. Highly educated workforce is substantial for intergeneration mobility. Those children having less educated parents with low income have high probability to be in the same income level at adult age while this probability is less with educated parents. Highly educated youth having educated parents are more likely to face higher unemployment duration because they are choosier than less educated youth. Those young workers having less education and living in the area where unemployment rate is high are more inclined to accept low wage jobs in order to support their families. Outcome of hazard ratio $[\exp(0.8830) - 1] \cdot 100 = 141.81\%$ for educated person states that educated person suffer less unemployment duration as compared with illiterate person. The lack of required qualifications has adverse impact on employment opportunities and bound them in limited field of work choice. . Advancement in technology increased substitution of physical capital for heavy routine worker in production process. Technical infrastructure like Machinery, equipment, plants and robotic computers are raised demand for educated and skilled workers as well as decreased the employment opportunity for heavy routine workers. Workers who have higher education but unemployed or underemployed are engaged in violent extremism similarly a worker who is unemployed or working in low wages and less satisfactory job are more frustrated and has complaint against societal system that is not providing him or her according to their qualification. So that longer spells is positively related to wage dispersion and availability of employment opportunity in local labor market. Hazard rate of wage dispersion $[\exp(0.9999) - 1] \cdot 100 = 171.801\%$ increases unemployment duration. So that the reason behind that Market is providing different pay scale job for skilled unskilled or semi-skilled worker.

Decision to stay unemployed is worker's choice. Workers who are looking for a good employment opportunity along with high pay scale and work facility always preferred to remain unemployed than accepting a low scale job that is already available. So wage dispersion leads to a longer spell if economy is not generating required job for capable workers. Local market is a significant indicator to show a clear picture of job creation in the market. Thus study concluded that length of unemployment is significantly influenced by required job characteristics, regional labor market condition incident of unemployment and wage structure.

Conclusion

The purpose of this study is to examine social and labor market factors that lengthen the unemployment spell by constructing duration data of Pakistan. Both parametric and non-parametric approaches of survival analysis are used as methodology. Personal characteristics market condition and household heterogeneity are key element for explaining length of unemployment. Result found that getting older has a positive association with longer spell. While young workers start working early so their probability is high to live in unemployment state because of less knowledge about prevailing market. Female workers experience longer spell of unemployment as compare to male because of childcare and social restriction on her. Educational attainment has significant impact on leaving probability. Less educated workers are less choosy than educated worker so that they leave the unemployment state earlier. Employment opportunity for educated worker is high. Furthermore a positive association is found between wage dispersion and longer spell of unemployment. Workers having higher education become choosier about quality of job and work environment.

After analyzing it is suggested to formulate a dynamic Labor market policy for targeted groups that consist of those individuals with less possibility to leave unemployment state for employment. Targeted group comprises of married female, single male individuals having less education with less skilled, high unemployment regions and first time job seeker Government should focus on the provision of standardized apprenticeship training program that will enhance not only their skills as well as their employability chances will also rise. First-time-job-seekers should be provided some sort of counseling for enhancing their job-search skills. Individuals

living in high unemployment provinces should be encouraged and subsidized to migrate to provinces where higher employment possibilities exist.

REFERENCES

Anders Frederiksen, Rikke Ibsen, Michael Rosholm and Niels Westergaard-Nielsen (May 2006) Labour Market Signalling and Unemployment Duration: An Empirical Analysis Using Employer-Employee Data, Discussion Paper No. 2132 IZA.

Alpin, C. and Shackleton, J.R. (1997) Labour Market Trends and Information Needs: Their Impact on Personnel Policies, *European Journal for Vocational Training*, 12, 713.

Arulampalam, W. and Stewart, M.B. (1995) The Determinants of Individual Unemployment Durations in an Era of High Unemployment, *Economic Journal*, 105, 321-332.

Atkinson, A.B., Gomulka, J., Micklewright, J. and Rau, N. (1984) Unemployment Benefit, Duration and Incentives in Britain: How robust is the Evidence?, *Journal of Political Economy*, 83, 3-26.

Atkinson, A.B. and Micklewright, J. (1992) Unemployment Compensation & Labor Market Transitions: A Critical Review, *Journal of Economic Literature*, 29, 1679-1727.

Business cycle duration dependence: A parametric approach. *Review of Economics and Statistics* 73, 254–60.

Fabian Lange, and Matthew Notowidigdo, “Duration Dependence and Labor Market Conditions: Evidence from a Field Experiment,” *Quarterly Journal of Economics*, 123 (3), (2013), 1123-1167.

Frederiksen, A. and E. Takáts, 2005, Layoffs as Part of an Optimal Incentive Mix: Theory and Evidence, Industrial Relations Section Working Paper # 502, Princeton University.

Frederiksen, A. and N. Westergaard-Nielsen, 2006, Where Did They go? Modeling Transitions Out of Jobs, Forthcoming in *Labour Economics*

Frijters, P. and B. van der Klaauw, 2003, Job Search with Nonparticipation, CEPR Discussion Papers # 3922. Gibbons, R. and L. Katz, 1991, Layoffs and Lemons, *Journal of Labor Economics*, Vol. 9, pp. 351-380.

Gerard J. van den Berg and Bas van der Klaauw (August 1998), Combining Micro and Macro Unemployment Duration Data, Working paper University Amsterdam, Tinbergen Institute and CEPR.

Heckman, J. J., 1981, Heterogeneity and State Dependence, In *Studies in Labor Markets* edited by Sherwin Rosen, Chicago: University of Chicago Press.

Heckman, J. J. and G. Borjas, 1980, Does Unemployment Cause Future Unemployment? Definitions, Questions and Answers from a Continuous Time Model of Heterogeneity and State Dependence, Special Symposium Issue on Unemployment, *Economica*, pp. 247-83.

Johannes F. Schmieder, Till von Wachter and Stefan Bender (December 2014), The Causal Effect of Unemployment Duration on Wages: Evidence from Unemployment Insurance Extensions, Discussion Paper No. 8700, and IZA.

Jonathan Ohn, Larry W. Taylor and Adrian Pagan (2004), Testing for duration dependence in economic cycles, *Econometrics Journal* (2004), volume 7, pp. 528–549.

Katz, Lawrence F. and Bruce D. Meyer, “The Impact of Potential Duration of Unemployment Benefits on the Duration of Unemployment Outcomes,” *Journal of Public Economics*, (1990), 45–71.

Keane, Michael P. and Kenneth I. Wolpin, “The Career Decisions of Young Men,” *Journal of Political Economy*, 105 (3), (1997), 473-522. Kroft, Kory and Matt J. Notowidigdo, “Should Unemployment Insurance Vary With the Local Unemployment Rate? Theory and Evidence,” mimeo, (2010).

Kory Kroft, Fabian Lange, and Matt J. Notowidigdo, “Long-Term Unemployment and the Great Recession: The Role of Composition, Duration Dependence, and Non-Participation,” mimeo, (2013).

McCulloch, J. H. (1975). The Monte Carlo cycle in business cycle activity. *Economic Inquiry* 13, 303–21.

Mudambi R. and L.W.Taylor (1991). A non parametric investigation of duration dependence in the American Business Cycle: A note. *Journal of Political Economy* 99, 654–6.

Mudambi, R and L.W Taylor (1995). Some non parametric tests for duration dependence, *Journal of Applied Statistics* 22, 163–77.

Mudholkar, G.S. D.K. Srivastava and G.D.Kollia (1996). A generalization of the weibull distribution with application to the analysis of survival data. *Journal of the American Statistical Association* 91, 1575–83.

Niemira, M. P. (1991). International application of Neftci's probability approach. In K. Lahiri and G. H. Moore (eds.). *Leading Economic Indicators: New Approaches and Forecasting Records*, pp. 91–108.

Pagan, A.R and K.A Sossounov (2002) .A simple frame work for analyzing bull and bear markets, *Journal of Applied Econometrics* 18, 23–46.

Sargan, J. D. and A. Bhargava (1983). Testing residuals from least squares regression for being generated by the Gaussian random walk. *Econometrica* 51, 153–74. Sichel, D. E. (1991).

William Collier (September 1998) *Unemployment Duration and Individual Heterogeneity: A Regional Study*, Working paper of University of Kent at Canterbury.

Zuehlke, T.W (2003), Business cycle duration dependence reconsidered, *Journal of Business and Economic Statistics* 21, 564–9.

ANNEX:

Table 3.1.1: Kaplan Meier survival and failure function:

Time of event(t)	No. of Pt. failed	Beginning total	Estimated Failure probability	Estimated Survival probability	Probability of surviving at the end of time (L)
1	2	2088	0.001	0.999	0.999
2	5	2078	0.0034	0.9966	0.9956
3	8	2070	0.0072	0.9928	0.9884
4	6	2062	0.0101	0.9899	0.9784
5	1	2056	0.0106	0.9894	0.968
6	4	2055	0.0125	0.9875	0.9559
7	4	2051	0.0144	0.9856	0.9422
8	1	2047	0.0149	0.9851	0.9281
10	3	2046	0.0164	0.9836	0.9129
11	1	1987	0.0169	0.9831	0.8975
13	1	1983	0.0174	0.9826	0.8819
15	10	1982	0.0223	0.9777	0.8622
16	0	1962	0.0223	0.9777	0.843
20	6	1960	0.0253	0.9747	0.8216
25	1	1933	0.0258	0.9742	0.8004
30	51	1896	0.052	0.948	0.7587
35	0	1844	0.052	0.948	0.7193
40	0	1840	0.052	0.9078	0.6983

60	78	1839	0.0922	0.9078	0.6339
62	0	1713	0.0922	0.9078	0.5754
90	56	1705	0.122	0.878	0.5052
120	41	1644	0.1439	0.8561	0.4325
121	0	1544	0.1439	0.8561	0.3703
130	0	1542	0.1439	0.8561	0.317
135	0	1536	0.1439	0.8561	0.2714
145	0	1533	0.1439	0.8561	0.2323
150	27	1532	0.159	0.841	0.1954
180	151	1485	0.2445	0.7555	0.1476
210	31	1329	0.2622	0.7378	0.1088
240	48	1295	0.2895	0.7105	0.0773
270	24	1242	0.3032	0.6968	0.0539
300	34	1218	0.3227	0.6773	0.0365
330	17	1184	0.3324	0.6676	0.0243
365	445	1167	0.587	0.413	0.01
450	1	722	0.5875	0.4125	0.0041
730	341	721	0.7826	0.2174	0.0009
910	1	380	0.7832	0.2168	0.0001
1095	147	379	0.8673	0.1327	0.00002
1460	91	232	0.9193	0.0807	0.000002
1825	59	141	0.9531	0.0469	0.000000098
2190	42	82	0.9771	0.0229	
2555	6	40	0.9806	0.0194	
2920	18	34	0.9808	0.0092	
3285	3	16	0.9926	0.0074	
3650	12	13	0.9994	0.0006	
4745	1	1	1	0	

Note: time event of “t” is measured in number of days and the surviving probability at end period of time “L”. The median survival time is 0.4130 for 365 median days. The approximation are obtained and inflexibly showed in

graphical form. The graph is plotted between probabilities of survival time (on vertical axis) and time duration (on horizontal axis).

Table 3.1.2: Showing unemployment duration by age:

Age groups	N	Percent	Mean Duration	Incident rate
11-20	523	25.05	451.2409	.002089
21-30	1,045	50.05	632.8919	.0014409
31-40	269	12.88	600.4796	.0011639
41-50	146	6.99	335.3562	.0017769
51-60	81	3.88	308.6173	.0018401
61-70	24	1.15	347.75	.001318
Total	2088	100	446.0559	

Source: author's estimation

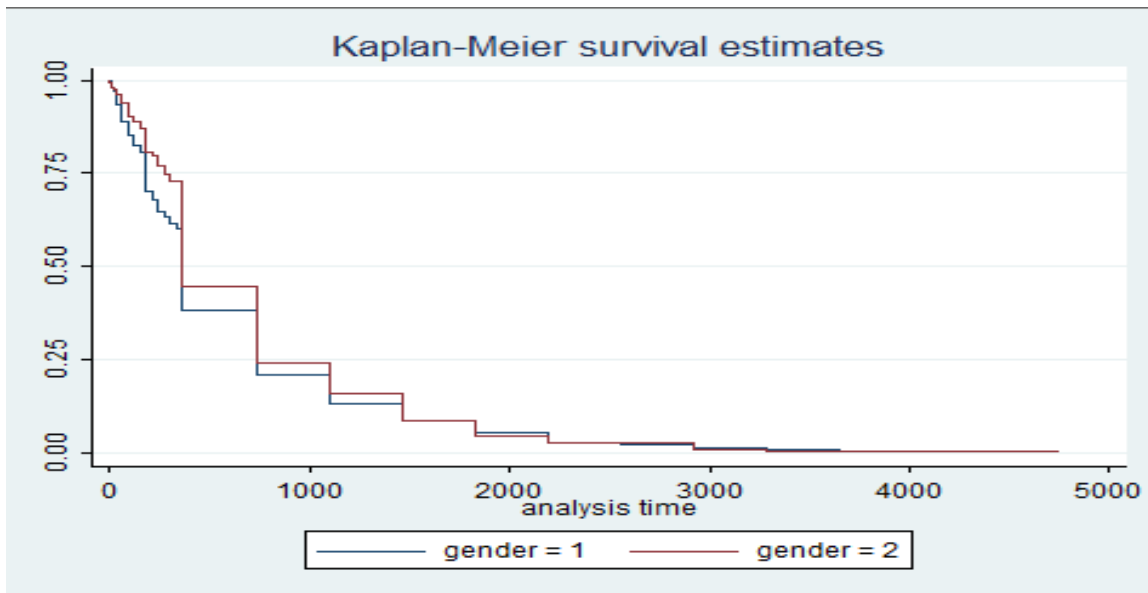
Graph 3.1: Kaplan Meier Survival Estimates for Age groups:

Source: author's estimation

Table 3.1.3: Showing unemployment duration by gender:

Gender	N	Percent	Mean duration	Incident risk
Male	1560	74.71	526.9564	.0016082
Female	528	25.29	604.4583	.0016082
Total	2088	100	565.7073	

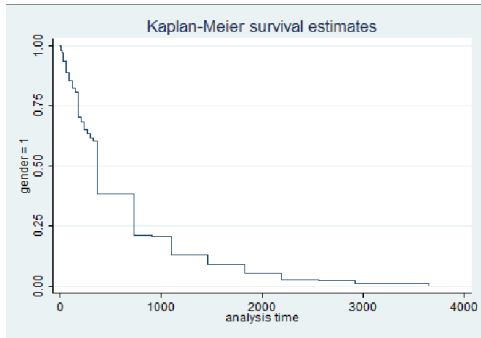
Source: author's estimation



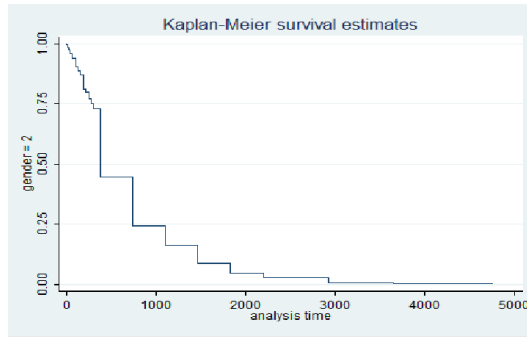
Source: author's estimation

Unemployed persons by gender

Graph 3.2: Kaplan-Meier Survival Estimates for gender

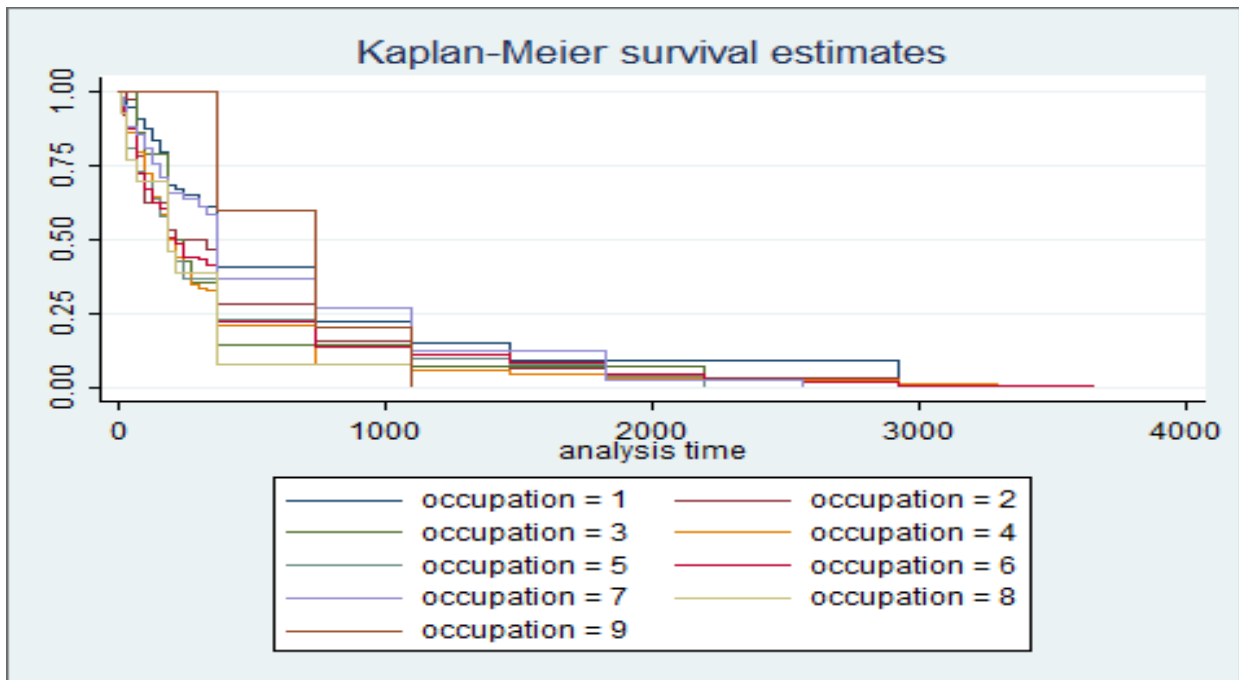


Male



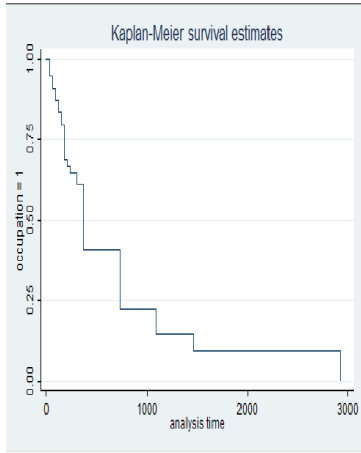
Female

Graph 3.3: Kaplan Meier Survival Estimates for Occupation

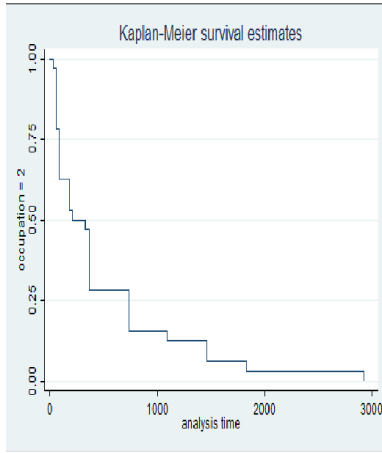


Source: author's estimation

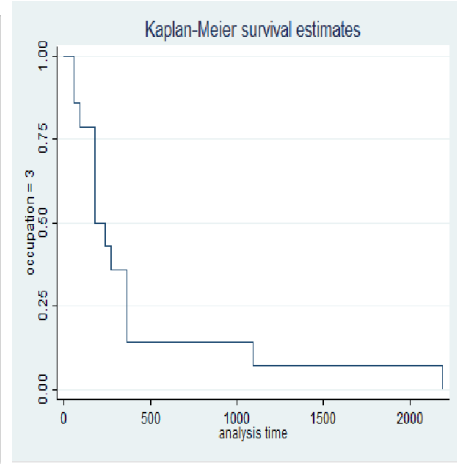
Unemployed persons by having past experience in different occupation



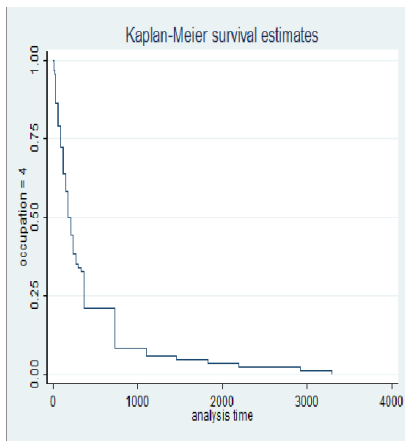
Manager



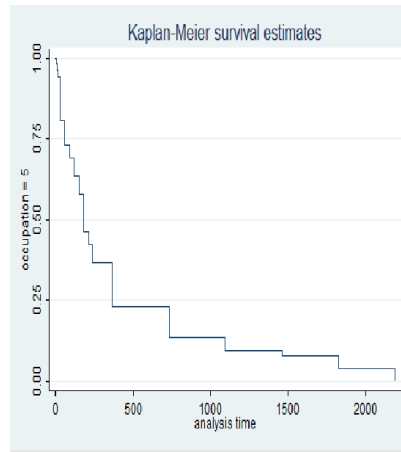
Professional



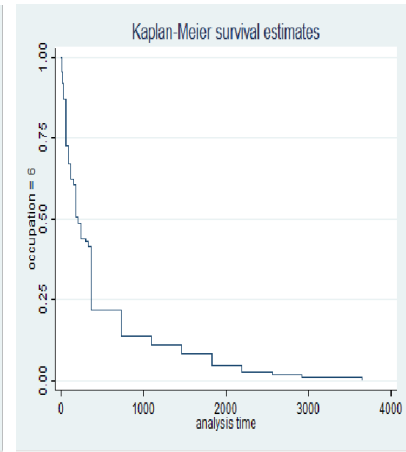
Technicians & associate professionals



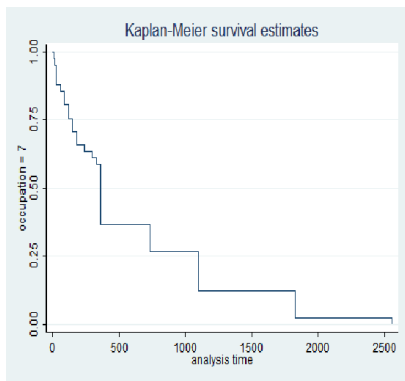
Clerical support workers



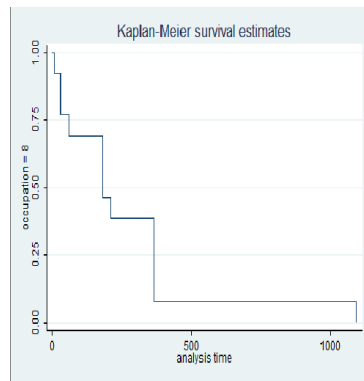
Services & sales workers



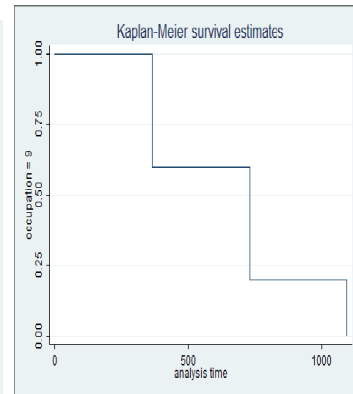
Agriculture & forestry worker



Craft & related trade workers

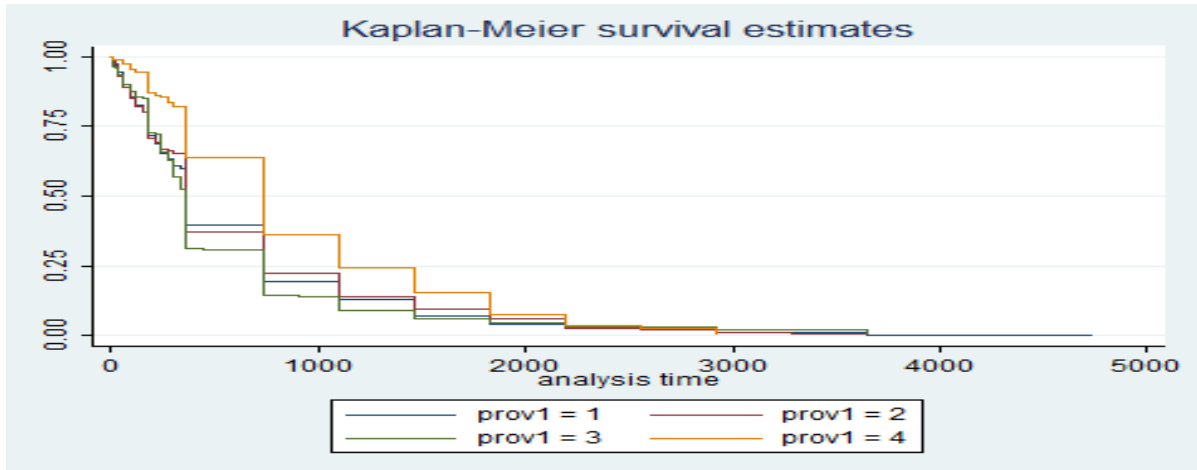


Plant & machine worker



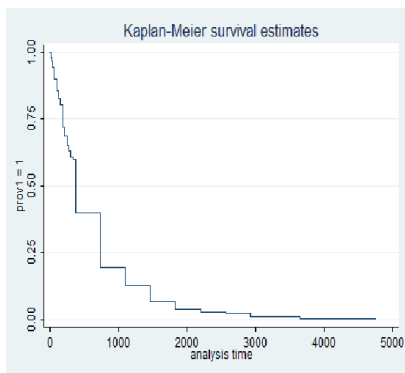
Elementary occupation

Graph 3.1: Kaplan Meier Survival Estimates for Province

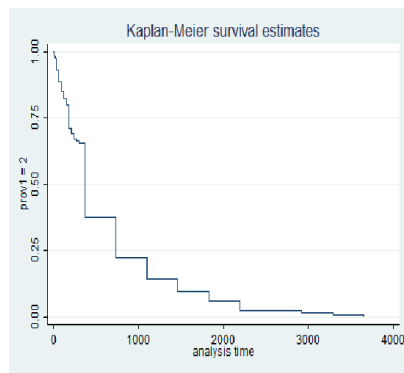


Source: Authors estimation

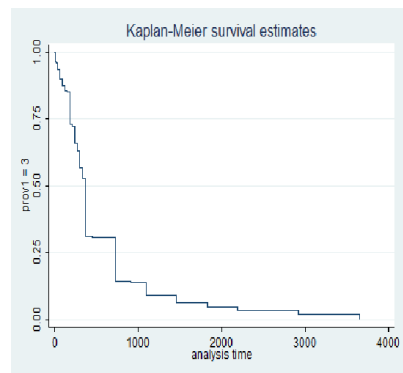
Unemployed persons by region



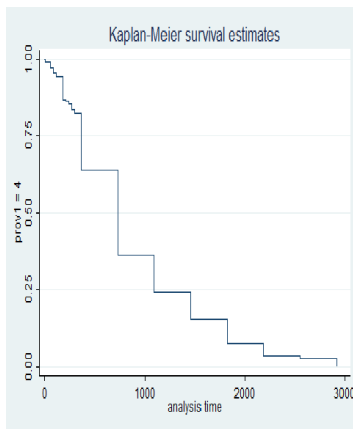
KPK



Punjab

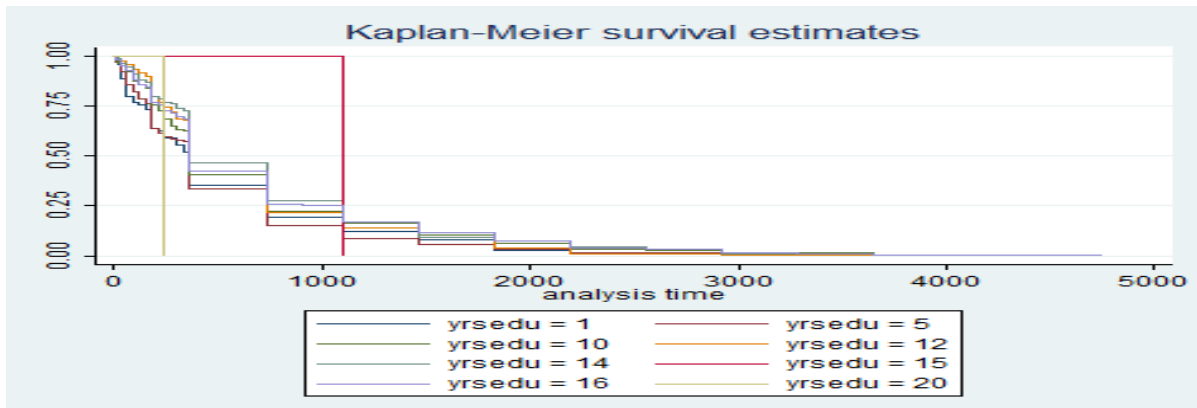


Sindh



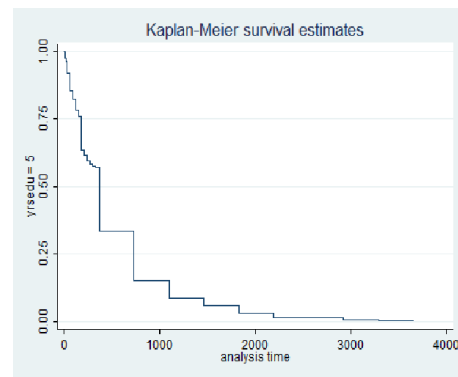
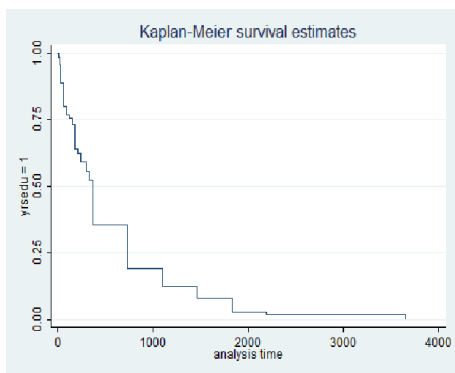
Baluchistan

Graph 3.1: Kaplan Meier Survival Estimates for Educational attainment

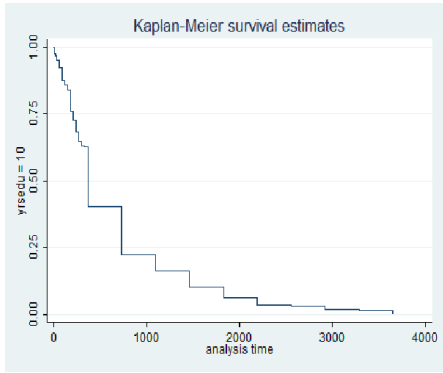


Source: author's estimation

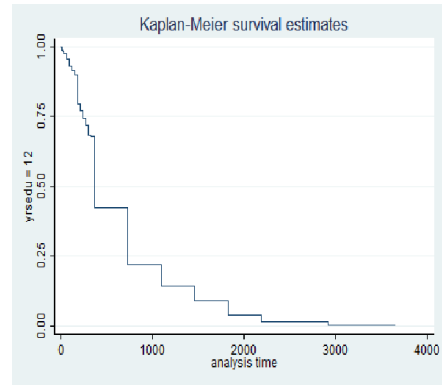
Unemployed person by level of education



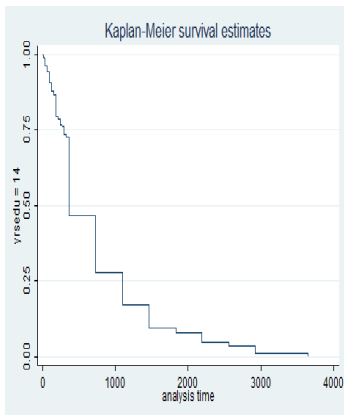
Primary



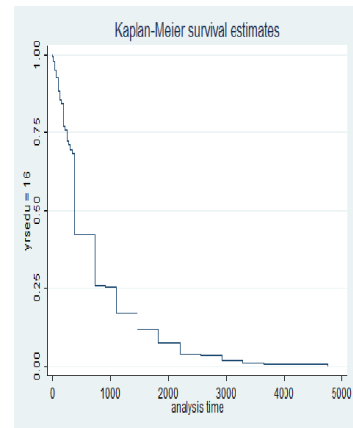
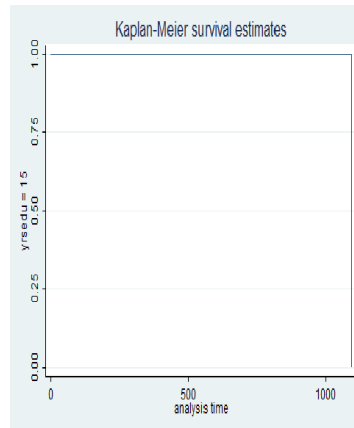
Middle



Metric



Inter



Graduation

Graduation (Honors)

Masters

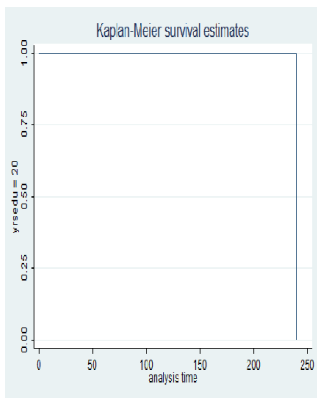


Table: 3.2.1- Regression Result of Exponential & Weibull distribution

variables	Exponential Hazard ratio	Weibull Hazard ratio
Age	.3167874 *	.2849474*
Age2	1.001026*	1.00115*
Years of schooling	.8830782*	.8655727*
Province		
Punjab	.250966*	.2012638*
Sindh	.1792263*	.1374922*
Baluchistan	.1927885*	.1488149*
Gender		
male	.4887008*	.4597626 *
Lfp	.7348877*	.7119938 *
Number of Children in household	.9092806*	.901855 *
Wage deviation	.9999892*	.9999877*
/ln_the /ln_p	-.3303036	.1326104
Theta	.7187055	.9720555
1/p	----	.8758063
No of observation	1588	1588
Wald chi2	17385.17	17385.17

Prob > chi2	0.000	0.000
Log likelihood	-2482.0547	-2482.0547
/ln_p	-----	.2073565

Note: Parenthesis *showing significant at 1% confidence level.